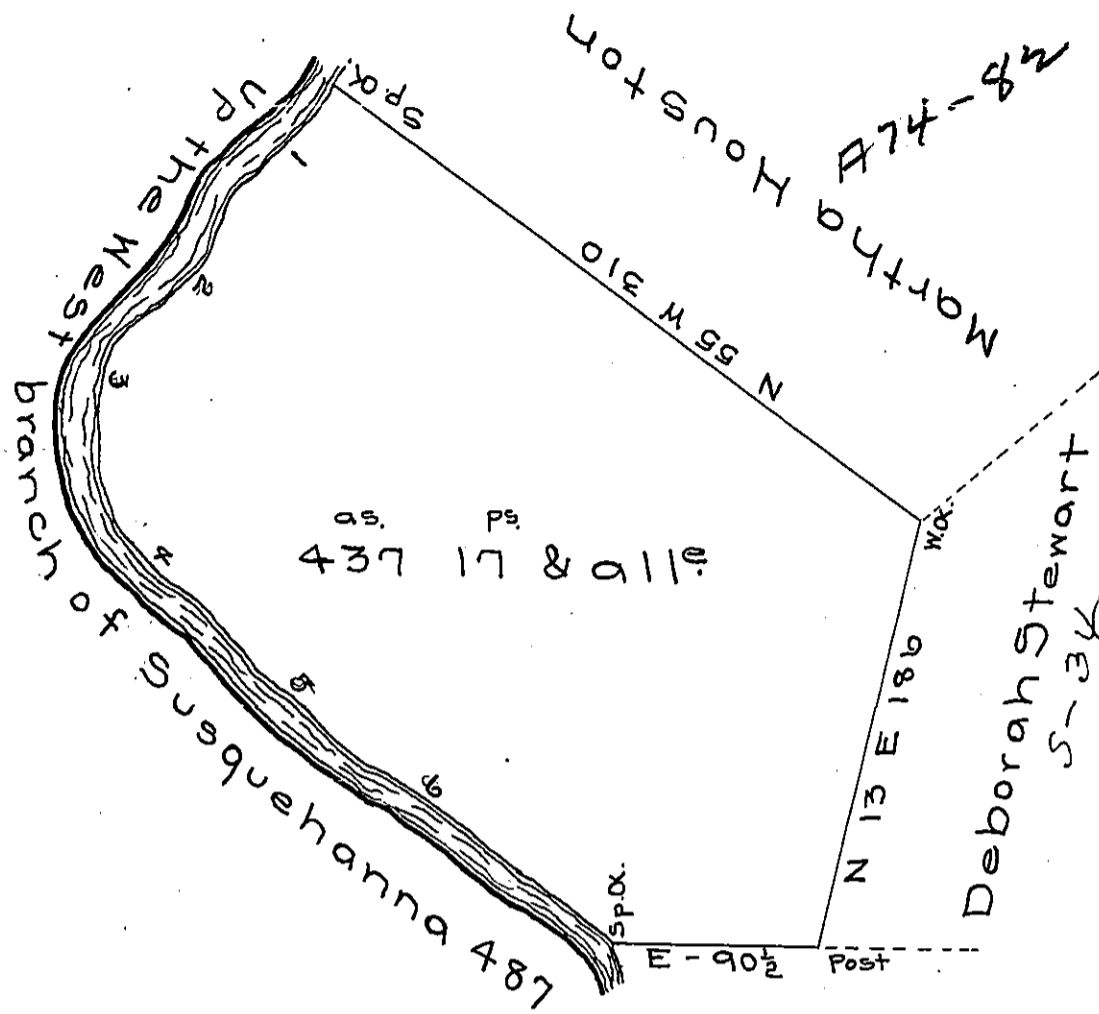


The Courses and Distance up the river

1	S	41	W	81
2	S	29	W	77
3	S	15	W	20
4	S	19	E	54
5	S	48	E	45
6	S	52	E	210
				487



Ann M^o Clenachan

Situate on the South side of the West branch of Susquehanna about 4 miles above the mouth of Milstone creek in the County of Huntingdon surveyed the 8th day of October 1792 to Polly M^o Clenechan in pursuance of her Warrant dated the 27th day of July 1792 containing four hundred and thirty seven acres seventeen perches and allowance of six ~~po~~^{po} for roads &c.

Dan! Brodhead Esq^r }
 Surveyor General }

John Canan D.S

IN TESTIMONY that the above is a copy of the original remaining on file in the Department of Internal Affairs of Pennsylvania, made conformably to an Act of Assembly approved the 16th day of February, 1833, I have hereunto set my Hand and caused the Seal of said Department to be affixed at Harrisburg, this twenty-eighth day of December 1905

Isaac P. Brown
 Secretary of Internal Affairs.